

Indicator Briefing

SPRING 2011 | ISSUE ONE | VOLUME FOUR



Although this report attempts to quantify the social implications of Nevada's current economic condition, the multitude of factors which cannot be readily quantified should neither be dismissed nor overlooked. There is no dollar value that can be assigned to the stress of unemployment – or underemployment – when households sit down to pay their bills each month, move money from place to place, make minimum payments and watch as their savings evaporate. There is no monetary value that

can be easily assigned to the stress of lost financial independence after a lifetime of hard work and self-sufficiency.

The social safety nets developed during the past century are designed to provide temporary assistance to individuals and families. But, what happens when “temporary” runs out by choice or fiscal necessity? Moreover, these nets are not designed to address the longer-run implications of these hardships. Like the Great Depression, the Great Recession is likely to be change people's views, attitudes and outlooks for decades to come.

Southern Nevada's unemployment rate has not benefited from the same trends being reported nationally, where unemployment dropped from the peak of 10.1 percent in October 2009 to 9.0 percent in December 2010. The unemployment rate in the Las Vegas-Par-

adise metropolitan statistical area (MSA) rose to 14.9 percent in December 2010, up from 14.3 in the prior month and 13.0 percent in December 2009, marking a new all-time high for the region.

The Las Vegas MSA also retained the top spot in terms of labor force unemployment when comparing the 30 largest metropolitan areas, with Riverside and Sacramento coming in a distant second and third at 13.9 percent and 12.5 percent, respectively. Despite the recent unemployment rate increase, the Nevada Department of Employment, Training and Rehabilitation (DETR) anticipates continued stabilization in the local job market characterized by slow economic growth and establishment-based employment in the Las Vegas MSA increased by 1,900 jobs in December.

Elevated unemployment levels among resi-

dents has forced many families to enroll in social assistance programs such as Temporary Assistance for Needy Families (TANF), a program designed to provide temporary assistance to needy families to care for dependent children in their own homes or in the homes of relative caretakers. The Nevada Division of Welfare and Supportive Services reported a total of 32,470 grant recipients during December 2010; up 10.3 percent when compared to same month prior year.

In addition, the Supplemental Nutrition Assistance Program (SNAP) reported significant increases year-over-year (+25.3 percent) with 324,658 Nevadans participating in the program during the month of December 2010 (latest data available). Akin to the legacy food stamp program, SNAP helps those in need to buy food needed to maintain good health. Note that in order to qualify for benefits, SNAP recipients must have near-poverty incomes and typically include low-income workers, unemployed persons, disabled or elderly persons, persons receiving other public assistance, or homeless persons. In total, 1 out of every 8 Nevada residents currently qualifies under this definition.

Three Square provided pantry meals to 57,032 families during November 2010 (latest available data); a number that increased 7.6 percent year-over-year and nearly doubled from the 31,735 households served two years ago. Three Square serves as a central location for the Las Vegas metropolitan area where food can be collected and then distributed to non-profit and faith-based

continued on page 2...

Prepared by:



WWW.APPLIEDANALYSIS.COM



Applied Analysis Southern Nevada Social Service Indicators

Spring 2011 <i>Social Well-Being Indicator Series</i>	INDICATOR VALUES				GROWTH RATE	
	Most Recent Data Available	Current Period	Previous Period	Same Period Previous Year	vs. Previous Period	vs. Same Period Previous Year
Las Vegas MSA Unemployment Rate	Dec-10	14.9%	14.3%	13.0%	0.6% ▲	1.9% ▲
Las Vegas Valley - New Foreclosures	Dec-10	1,514	1,020	904	48.4% ▲	67.5% ▲
Notice of Breaches and Defaults	Dec-10	4,161	4,393	5,918	-5.3% ▼	-29.7% ▼
Nevada TANF Caseloads	Dec-10	32,470	31,111	29,440	4.4% ▲	10.3% ▲
Supplemental Nutrition Assistance Recipients	Dec-10	324,658	322,950	259,196	0.5% ▲	25.3% ▲
Medicaid Eligible Recipients (Retroactive)	Dec-10	280,285	277,499	238,590	1.0% ▲	17.5% ▲
Nevada Checkup Enrollment	Dec-10	21,002	21,299	21,515	-1.4% ▼	-2.4% ▼
Households Served by Three Square	Nov-10	57,032	55,812	52,988	2.2% ▲	7.6% ▲
Property Crime Incidents	Nov-10	3,653	3,614	3,839	1.1% ▲	-4.8% ▼
Juvenile Referrals	Dec-10	1,680	1,791	2,194	-6.2% ▼	-23.4% ▼
Students Receiving Free & Reduced Lunch Assistance	Dec-10	53.1%	52.5%	48.3%	0.6% ▲	4.8% ▲
Homeless Children Enrolled in the CCSD	Dec-10	4,678	4,758	5,901	-1.7% ▼	-20.7% ▼
Number of All CPS Investigation Calls	Dec-10	1,011	1,139	442	-11.2% ▼	128.7% ▲
Social Service Clients Not Seen Due to Lack of Capacity	Dec-10	3,462	2,853	1,950	21.3% ▲	77.5% ▲
Emergency Room Holds at UMC	Dec-10	1,468	1,445	1,332	1.6% ▲	10.2% ▲

continued from cover...


organizations, or used for childhood and senior nutrition programs facilitated by Three Square.

A similar upward movement was furthermore noticed among the Clark County School District (“CCSD”) student body, as 46.4 percent and 6.7 percent of students received free and reduced lunch assistance, respectively, during the final month of 2010. In total, 164,863 CCSD students were part of free and reduced lunch programs, representing a 4.8-percent increase over the same month of the prior year.

Notably, the economic downturn has not translated into an increase in criminal activity. Property crime incidents reported by the Metropolitan Police Department command area during the year were down compared to 2009, due to falling larceny and auto theft figures. In November, property crimes declined by 4.8 percent year-over-year with 3,653 incidents reported, representing the 22nd month of consecutive declines. Barring auto theft, reported larceny thefts, which accounted for 50.3 percent of total property crimes, declined by 6.2 percent when compared to the same month prior year. Juvenile referrals in Clark County declined for the 7th

consecutive month as 1,680 youths were cited and/or arrested in December 2010; this marked a decline of 4.8 percent over the prior year.

Clark County notices of default on home mortgages, which include breaches and lis pendens, have continually declined. When compared to the same month of the prior year, 1,757 fewer notices (-29.7 percent) were filed and delivered in December 2010, representing the 11th decline in the past 12 months. On an annualized basis, notices of defaults have declined 24.0 percent compared to the prior 12 months. Bank acquisitions reported by SalesTraq, which represent residential units that have been repossessed by the lender, showed a similar trend during the year, posting an aggregate decline of 14.2 percent despite a 67.5 percent increase reported during the final month of 2010.

While the social indicators outlined within this report are mixed, the lingering impacts of the most recent downturn are apparent throughout the community. We remain concerned about the strength of the region’s social safety net to sustain an ever-growing demand by displaced employees and their families. 

Applied Analysis is a Nevada-based advisory services firm founded in 1997. We are an information and analysis resource for both the public and private sectors. Our team has extensive experience in economics, real estate, hospitality, gaming, information technology and finance. We apply this knowledge in an effort to develop creative solutions to our client’s challenges. To put it simply, we are a solutions resource. Our firm is guided by our core values - integrity, diligence and dedication. Our future is branded by the success of our clients and the quality of our professionals. Our commitment lies therein.

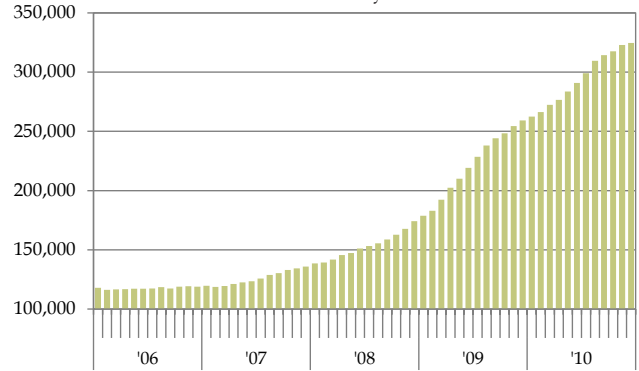
Copyright © 2011 Applied Analysis. All rights reserved. No portion of this Social Services Indicator Briefing may be reproduced without express written permission.

Social Services Indicator Briefing

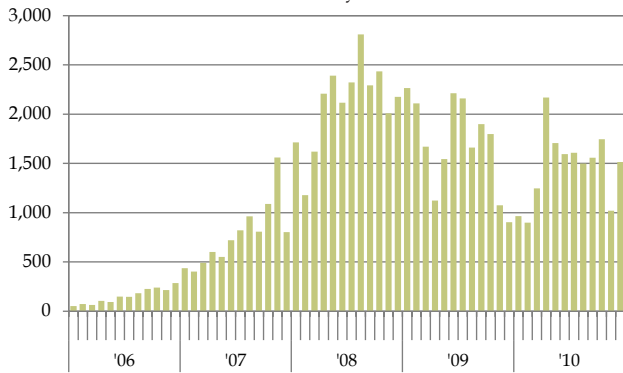
Las Vegas Unemployment Rate
Monthly Series



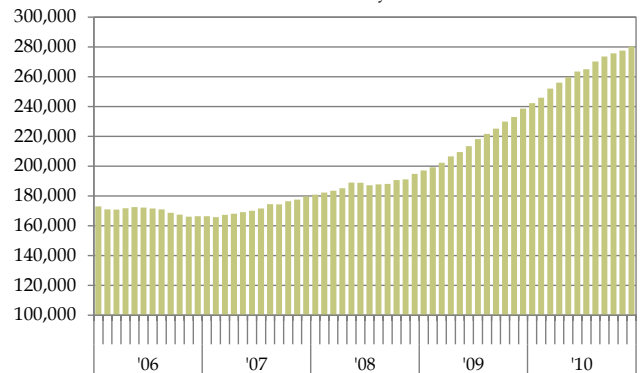
Supplemental Nutrition Assistance Recipients
Monthly Series



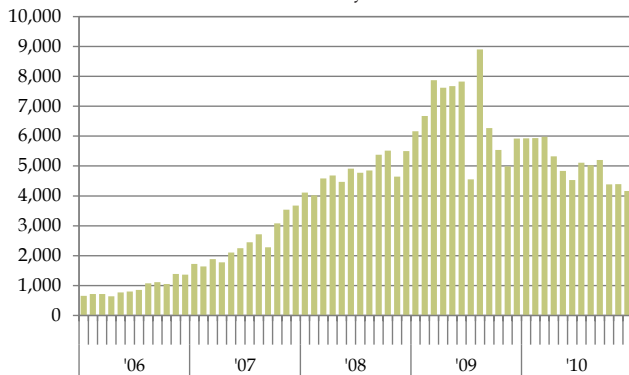
Las Vegas Foreclosures - New
Monthly Series



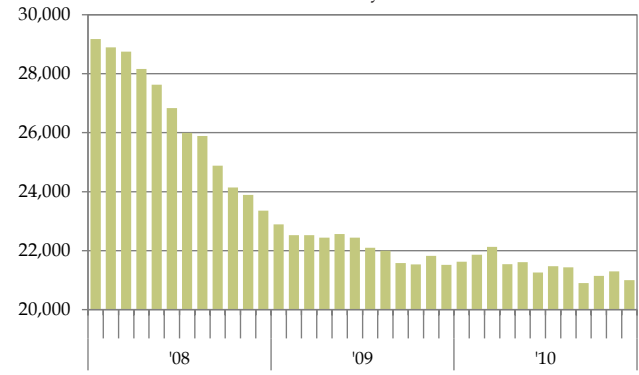
Medicaid Eligible Recipients (Retroactive)
Monthly Series



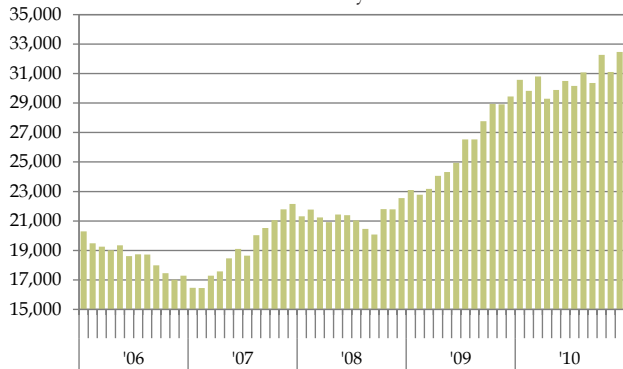
Notices of Default
Monthly Series



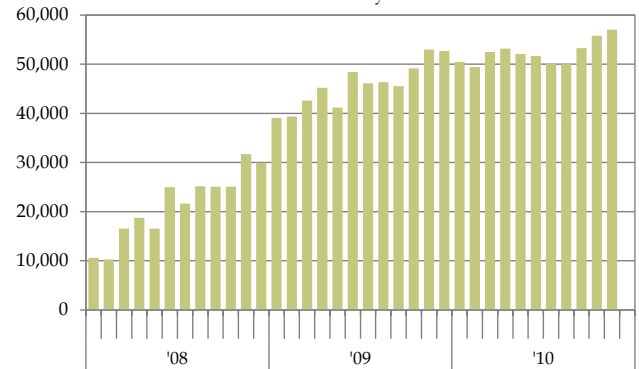
Nevada Checkup Enrollment
Monthly Series



Nevada TANF Caseloads
Monthly Series

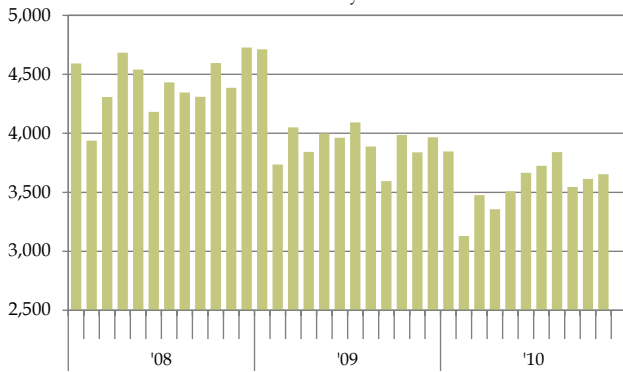


Households Served by Three Square
Monthly Series

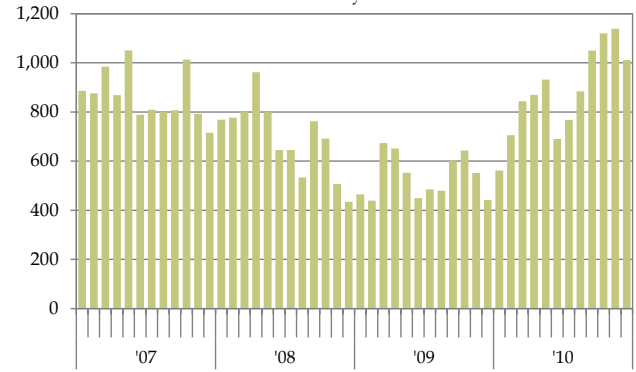


Social Services Indicator Briefing

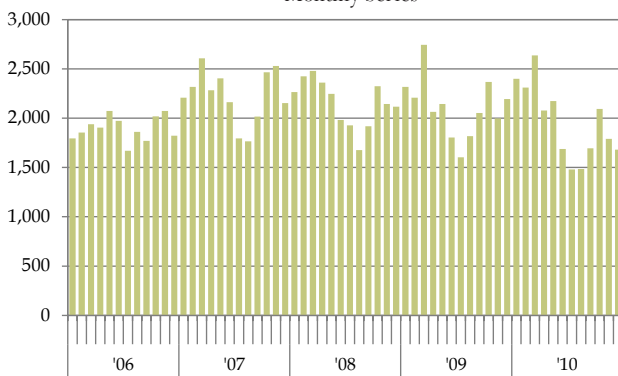
Property Crime Incidents
Monthly Series



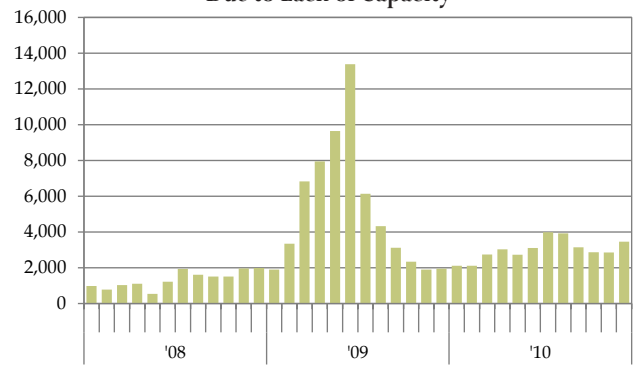
Number of All CPS Investigation Calls
Monthly Series



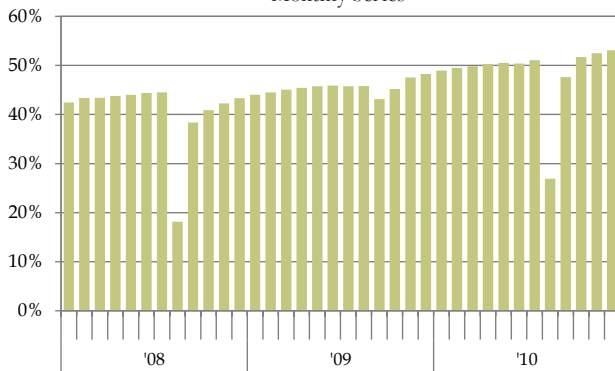
Juvenile Referrals
Monthly Series



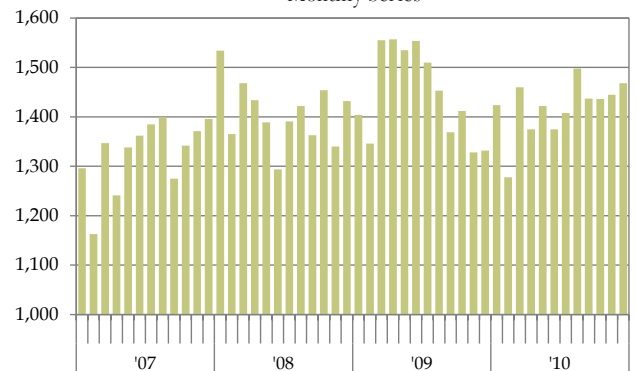
Social Service Clients Not Seen Due to Lack of Capacity



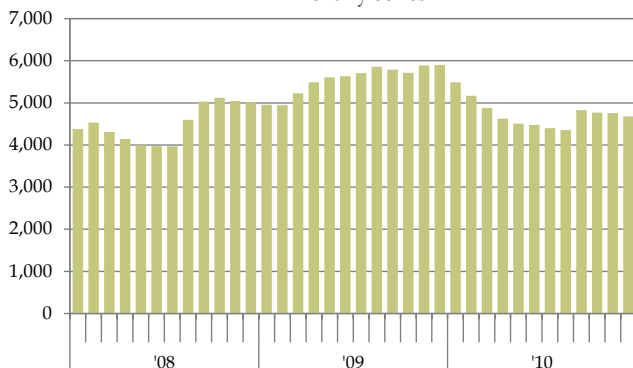
Students Receiving Free & Reduced Lunch Assistance
Monthly Series



Emergency Room Holds at UMC
Monthly Series



Homeless Children Enrolled in the CCSD
Monthly Series



Social Services Indicator Briefing

